



Unified Charts

SAMPLE INSTRUCTION / DOWNLOAD PDF

Instructions: (Windows virtual DVD method):

Step 1: If running Windows 7 or lower, install the WinCDEmu-4.0.exe by double clicking. This will allow you to mount the .iso image as a virtual drive. Windows 8 onwards has native support for mounting .iso as a virtual drive. But we still recommend getting WinCDEmu, as it allows easier control of drive letters.

Download WinCDEmu-4.1 (1.62 Mb) [Download from us](#)

Download direct from maker [Download from makers](#)



Instructions

Download and install the WinCDEmu-4.0.exe by double clicking. This only needs doing once. This will allow you to mount the .iso image as a virtual drive. FREE

Step 2: Next download the Unified Chart virtual DVD product you have just paid for. This is a BIG download, UK-Ireland is 1.6 Gb, so make sure you have a good broadband connection.

[Download link here](#)

When the .iso arrives, put it on your desktop. Make backup copies and stash safely. The SAME .iso image can be used on your backup machine, after activation. No need to download it more than once, make copies.

With the .iso image on your desktop, try double clicking it..or right clicking it. The aim is to “mount” the .iso as if it was a real DVD in a drive. You need to be online for this bit:

Make sure you have your activation code printed out in large type on paper, and in front of you. You will see why shortly.

First use on a machine: The first time you try and mount the drive, it will try and “phone home” for activation. **You must be ONLINE for this bit.** You will need to enter the code we send you by email very carefully. It will look a bit like THIS sample: 0-CSC-3N75P2 **Once a code is used it will never work again.** Note differences between 0 zero and O capital o and 1 one and I capital i . **Subsequent uses will not require the unlock code.**

You will have received TWO activation codes, One working installation with ONE backup installation in reserve in case you lose your working copy somehow. Cross out the one you have just used.

After "mounting" the .iso image, the “run me” unlocking utility should run, and you will get EULA, click I agree. Charts will be unlocked.

If the unlocking sequence doesn't run automatically you will have to find the mounted DVD image, open it and click on the “Run Me” utility to unlock it.

Step 3: *Point* your OpenCPN, Polar Navy or Expedition software at the virtual drive and use the charts. Normally when you shut down your machine, the virtual drive will dis-mount. At next use double click the .iso image to mount the drive and use. The “run me” unlocking utility should run, and you will get EULA, click I agree. Charts will be unlocked. IF the “Run Me” doesn't run automatically when you mount the drive, locate it on the virtual drive and double click it to run it. If it does not run, the charts will remain unusable.

SeaClear. There are a special set of charts on the DVD image, just for SeaClear, called “SeaClear_Image_Charts” OpenCPN and others can't read these, and SeaClear can't read the charts in the “CPN+Others_Charts” folder. With SeaClear, you will have to fire up MapCal and use:

Tools >>> Set Directories>>> then “navigate to” the “SeaClear_Image_Charts” folder on the virtual DVD.

Then use Tools>>>>Autoload List >>>Recreate. MapCal will index the charts, and

SeaClear will be able to use them.

Tips:

The idea is to try and “mount” the virtual DVD using the same drive letter each time. With the WinCDEmu software, on Windows Vista and 7, it's very straightforward. Normally it will offer to mount as Drive V in the first instance. Just stick to that, and point your nav programs at Drive V or the folders within.

Confusion can occur when Windows 8 or 10 handles the mounting of the .iso image. These will normally allocate the next available drive letter to the virtual DVD. So it may be D..or may be E or F or other if you have some USBs plugged in....The best plan is probably to RIGHT CLICK the .iso on your desktop and get WinCDEmu to do the mounting...(as drive V maybe)

The other thing that needs to be understood is that when you close your machine, the virtual DVD will “Eject” (dis-mount). So you need to to the start up unlocking sequence each time you start your machine if you want to use the charts.

Power users will set up the WinCDEmu to re-mount the drive automatically at start up, with a short cut in place to the “Run Me” utility.

It's actually simple to use in reality, once you get used to the idea that you are using a virtual DVD, that needs inserting (Mount), and Ejecting.

“You will have received TWO activation codes, One working installation with ONE backup installation in reserve in case you lose your working copy somehow”

There is a fundamental difference between having “2 Windows activations” and the statement above. It means if you lose, break, de-activate or otherwise break your working installation...you will then need to use your BACKUP installation code.

We specifically do not recommend this product for those who keep having problems with their Windows machine, or who are likely to want to change / modify / upgrade / swap their machines. Use the USB version instead.

Bearing in mind that each activation code will only work ONCE and never again, (even on the same machine), here are a couple of tips to make sure you don't lose your charts by mistake.

1. Once the activation has been done and tested, set a system restore point and label it. Do not roll back your system past that restore point in future.
2. Do not change your OS by upgrading to W10...do that first if you have to... before activation of the Unified Charts.
3. Don't change your hard drive, format it, or re-install Windows

For the average user these things won't be an issue, just be aware that you could lose the charts if you change anything about the target machine... and then you will have to use

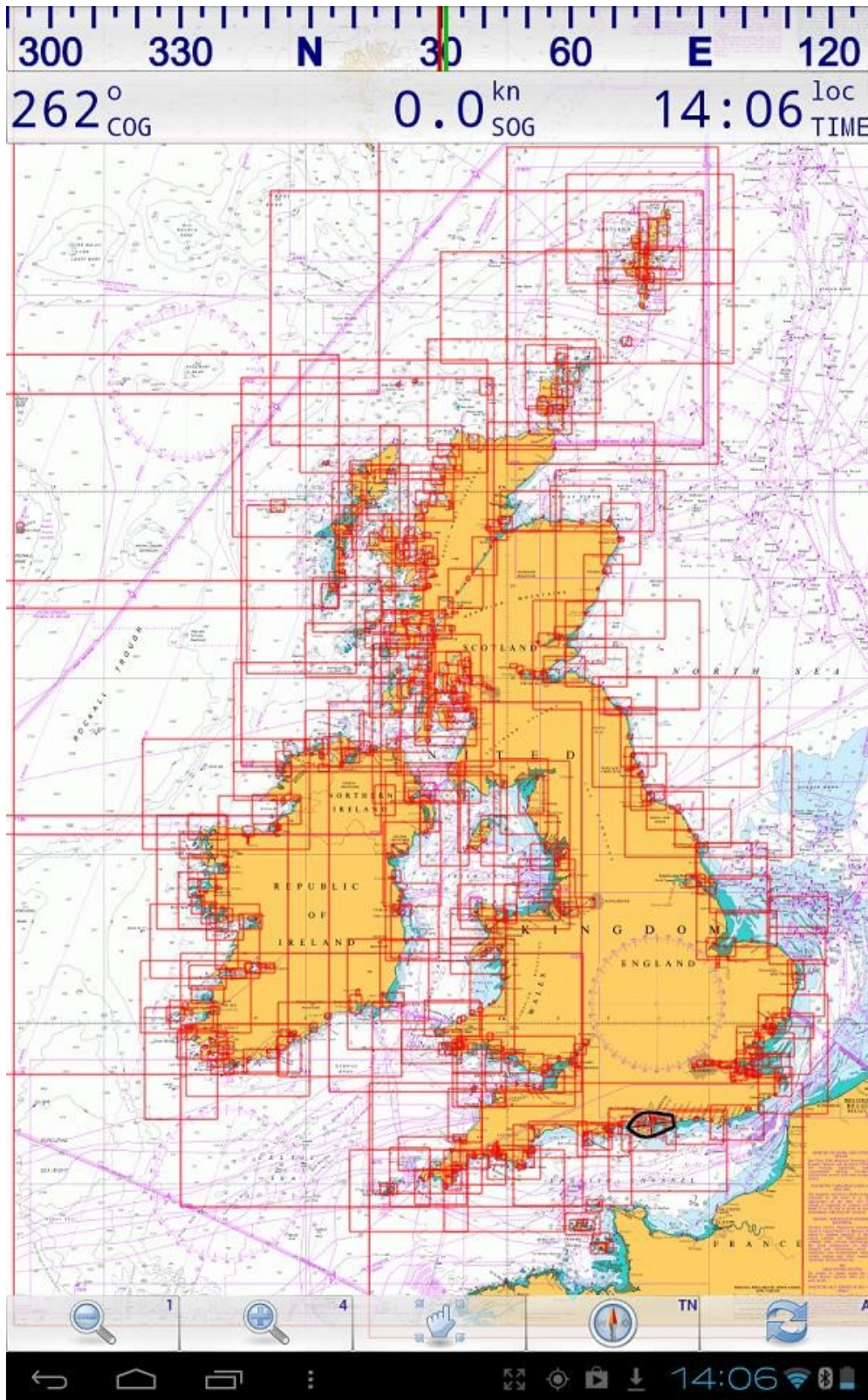
your backup. We will only keep the backup activation system running for a couple of years from the edition date of the product... so it's no good trying to use a second activation 5 years down the line.

Do not worry about accidentally losing your downloaded .iso image. Once the activation process is done ANY copy of THAT .iso image will work on the target machine. So you can make copies, you could even burn it to a DVD.. which will then work on your machine.

Conclusion Unified Charts, virtual DVD for Windows:

It's beyond the scope of this introduction PDF to really explain how to use the navigation programs that can be used with these charts. We don't make the nav programs. But they DO work with our charts... and if you're stuck, call 01983 293757 Mon-Fri 11-4 and we will try and help you get your chosen program working with the charts.

Instructions for loading Marine Navigator onto your Android device:



The above screenshot shows the UK-Ireland chart outlines in "Marine Navigator"

Why use an Android tablet ?

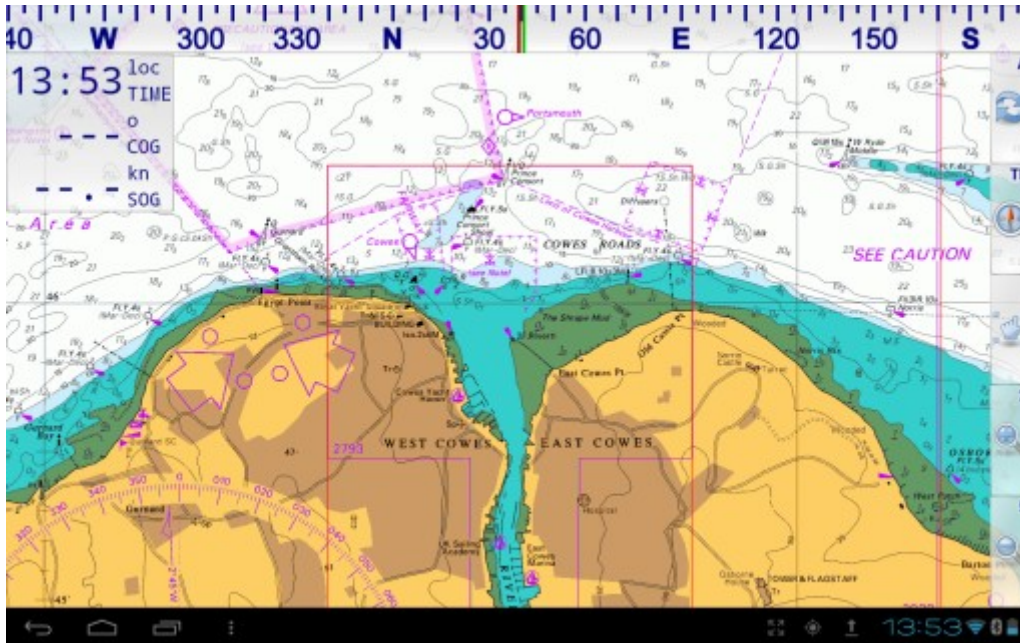
Because if you get a decent tablet with 10" screen (like a Samsung), and built in GPS and compass... using these charts in conjunction with "Marine Navigator" app (buy for about £6.50 in the Google Play Store) will give you a fully featured chart plotter, that's "stand alone" and complete. No connecting GPS sets, it's all there already. The charts are fully installed, no internet needed (after installation) , use at sea. Use in the cockpit or chart table. You can get waterproof protective cases for the tablet too. Long battery life, quick start up... what more could you want ?

The Charts:

Made from standard raster charts. Same charts as the downloaded Unified Charts virtual DVD you have just bought

Why "Marine Navigator" ?

Because we've found it to be the most fully featured app available. In addition to our encrypted charts, it can also use standard BSB2/3 charts you may already have. The designer Ronald Koenig, is responsive and continues to update his app all the time. This app can even calculate routes using Great Circle or Rhumb lines.



"Marine Navigator is an offline navigator using raster navigational charts (RNC's) to plot your position in real time. This way you can navigate with true copies of official paper charts on your mobile device. This full version of the Marine Navigator provides besides the functionality of the lite version the following enhanced functions:

- * automatic chart switching depending on current position and zoom level
- * scrolling through all charts available for the current location by "press and hold" zoom buttons
- * display of number of available charts for current location in the zoom buttons
- * display of outlines of installed charts in active chart
- * chart rotation (True North, True Course, Compass Heading, original chart orientation)
- * tracks, way points, routes
- * follow route automatically
- * intuitive route editor
- * gpx import and export of waypoints and routes
- * gpx export of tracks
- * recording of tracks in active and standby mode
- * length of recorded tracks only limited by the capacity of the external storage (SDCARD)
- * compass (magnetic north, true north)
- * different dashboard layouts (basic data, detailed route data, detailed GPS data including graphical status info)
- * Man Over Board (MOB) functions"

Download the [PDF manual](#) for *using* Marine Navigator

Our favourite feature so far: Being able to point the tablet at the bows, "Compass Up", and having the "True Course Line" switched on. This show as a dotted line stretching ahead the CMG by the boat. So "at a glance" the navigator can see how much the current is having an effect on the boat at that instant. (Or leeway for that matter).

The "Compass Up" feature also allows you to positively identify buoys or seamarks from a distance, by lining them up with the tablet/phone. Recent addition "Pinch to zoom" has really lit up this app !

How easy is it to install this downloaded chartset ?

Being sold separately from the app, (we make the charts, NOT the app) and not available in the Play Store means you have to install these yourself. It's not difficult, the whole process inc. download can be now done on the Android device. It's a bit like 2 part paint, you download the body (the chartset) and the catalyst (small token comes from us separately upon activation). The 2 are combined in the Android device and it's ready to use. Purchasers of this download are entitled to TWO Android installations in addition to the Windows usage (subject to EULA terms). The chartset *does not expire*, but you are encouraged to renew yearly.

Step 1

Download a PDF of the *installation* instructions [HERE](#) Note:

Simplified activation process.

Suggestion: Print this off and have to hand as installing. **Read the installation instructions, gather together everything required.**

"The End User License Agreement (**EULA**) is appended to the installation instructions make sure you read and understand this before purchase, IN PARTICULAR note you must do all installations within 12 months of ORIGINAL purchase"

"This is basically a "freebie" bundled with the Unified Charts, the EULA conditions apply the same as if you'd simply bought these with no Unified Charts"... Read above

Step 2

Do this DIRECTLY on the target Android device, maybe email this PDF to the Android, so you can use the link below

NOW download the 2016 1.08 Gb UK/IRL ENCRYPTED chartset (Broadband connection needed) direct to your Android device [Download link HERE](#)

Download time 15-30 mins on broadband. **These charts are no use in any other app or program, and remain encrypted and un-useable untill activated by us.**

Follow the instructions in the PDF enclosed up to the point that Marine Navigator prepares an authorisation email asking for your PayPal receipt number.

Step 3

Final activation stage

Now use your shopping cart receipt with unique transaction ID (eg: RCxxxxxxxxxxx) from when you purchased the Unified Charts with bundled Android capability. Use this transaction ID in the authorisation email the app will generate instead of the PayPal unique transaction ID the email will ask for.

Now send the authorisation email from your Android device, after filling in the details required. You can add into the body of the email an extra email address you'd like us to send the unlock token to if required (one you can collect on your PC if required).

Once you receive the reply from us, carry on with the instruction sheet, you're almost done !

Apart from the charts, you will need to purchase the **LATEST PAID VERSION** of "Marine Navigator" app, by Ronald Koenig directly from your Android device, available at the Google Play Store for about £6.50. Marine Navigator is not restricted to just using our licensed and encrypted charts, but can use any BSB2/3 charts you may already have. If you've been using an earlier version, go to PlayStore and update to the latest version for free